

**Annual Review of National SBT Fisheries for the  
Scientific Committee**

**New Zealand**

**2013**

## Executive Summary

This report describes the New Zealand southern bluefin tuna (SBT) fishery for 2012 and the 2011/12 fishing year. Commercial landings were close to 775t in the 2011/12 fishing year, which ran from 1 October 2011 to 30 September 2012. Scaled observer data was used to estimate discards from the fishery and the status of discards on release. New Zealand allows for discard mortality and recreational catch within its national allocation and it is unlikely that those allowances were exceeded in 2012. Only six fish were reported as non-commercial SBT catch from four recreational charter vessels in 2012. Four of which were landed (estimated total weight 131kg) and two were released alive (estimated total weight of 165kg).

CPUE in 2012 increased for both the domestic fishery and the charter fleet, which largely fishes the west coast of the South Island (CCSBT region 6). The catch rate data reflect the increased abundance of small fish.

All four charter vessels were covered by observers in 2012. Coverage by the observers was 80% and 84% for catch (numbers) and effort (hooks) respectively. For the domestic fishery in 2011/12 coverage was 9% and 7% of catch and effort.

## Table of Contents

Executive Summary .....	1
Table of Contents .....	2
1 Introduction .....	3
2 Catch and Effort .....	4
3 Nominal CPUE.....	6
4 Size composition .....	7
4.1.1 Size composition data.....	7
4.1.2 Direct ageing data.....	8
5 Fleet size and distribution.....	16
6 Other relevant information .....	21
6.1.1 Observer programme .....	21
6.1.2 Otolith collection .....	22
6.1.3 Estimation of non-retained catches.....	22
6.1.4 Non-commercial catches .....	22
7 Acknowledgements .....	23

# 1 Introduction

Historically both adult and juvenile southern bluefin tuna (SBT) were distributed around New Zealand. During the 1960s and 1970s juvenile SBT were encountered on both the east and west coasts of the North Island and the west coast of the South Island during summer months – with several tonnes taken in pole and line and troll fisheries.

From the late 1970s and early 1980s, a concerted effort to develop a domestic fishery to service the Japanese market was undertaken. By 1982 a handline fishery was established, with the catch frozen onboard a former Japanese longline vessel. The handline fishery continued, albeit at a reduced level, following the record 1982 season (305t landed) into the early 1990s when longlining became the dominant fishing method for SBT.

The New Zealand SBT fishery was constrained by a national catch limit of 420t per year between 1989 and 2008/09. New Zealand set a TAC of 532t for the 2009/10 fishing year, in reflection of the allocation decisions made at CCSBT16 in 2009. New Zealand subsequently advised CCSBT that its catches in 2010 and 2011 would average 570t. Taking into account unfished commercial Annual Catch Entitlements carried over from the 2009 fishing year, the total available catch to the New Zealand fishery in 2010 was 570t. New Zealand's TAC has been set in accordance with the Management Procedure since its adoption by the CCSBT. During the few occasions historically when New Zealand exceeded its catch limit, the subsequent year's catch limit has been reduced to adjust for the over-catch (Figure 1; Table 1).

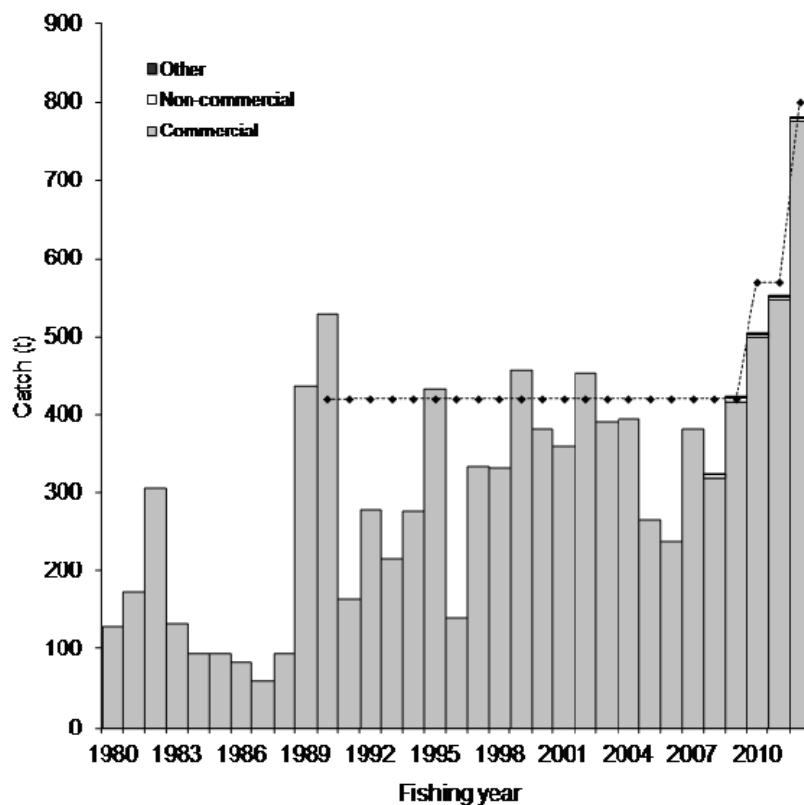


Figure 1: Commercial catches of southern bluefin tuna (tonnes whole weight) by New Zealand fishing year (1 October to 30 September). Annual total catch is from Licensed Fish Receiver returns for 1998/99 to 2000/01, and from Monthly Harvest Returns from permit holders since 2001/02. The dashed horizontal line refers to the catch limit for New Zealand (420t between 1989 and 2008/09, and 570t in 2009/10). From the 2007/08 fishing year, estimates of non-commercial catch, and discard mortality are included.

All but a few tonnes of the commercial SBT catch are now taken by longline. SBT catches are taken chiefly off the southwest coast of the South Island (WCSI; CCSBT Region 6) and off the east coast of the North Island (ECNI; CCSBT Region 5) from April to July. Longlining off the WCSI is almost entirely targeted at SBT. The fleet operating off the southwest coast is primarily composed of the larger –60° freezer vessels of the charter fleet. The generally heavier weather conditions off the WCSI compared to the ECNI means that fewer of the smaller domestic owned and operated vessels operate in this area.

Smaller domestically owned and operated “ice boats” operate in the longline fishery off the ECNI. These vessels are typically at sea for only a few days, and land SBT both as a target and as a bycatch of bigeye target sets.

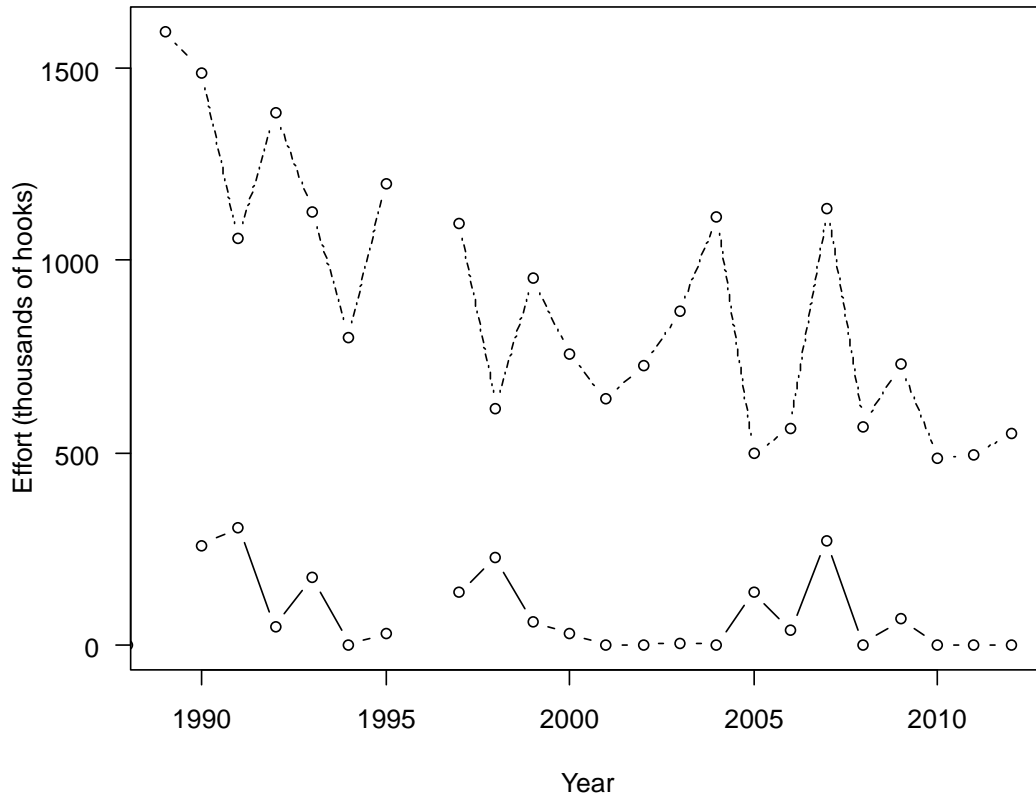
SBT has been managed under a Quota Management System (QMS) since 1 October 2004. The introduction to the QMS saw a change from the “Olympic” race for fish and was associated with a consolidation of the fleet.

The 2005/06 fishing season resulted in the lowest NZ catch in 10 years (238t). This was attributed to two main factors: the absence of new recruitment into the New Zealand longline fishery leading to decreased vulnerable biomass (as illustrated in the continued period of low CPUE in the charter fleet); and the decline in longline effort from the domestic fleet and charter fleets. Catches have increased since then as a consequence of a consolidation of the domestic fleet and small fish reappearing in the catch. For the 2011/12 season, the fishery had a Total Allowable Commercial Catch (TACC) equivalent to 787t, the remainder of New Zealand’s TAC being allocated to recreational (eight tonnes) and customary non-commercial fishers (one tonne), and other sources of fishing-related mortality (four tonnes). In 2011/12 fishing year commercial removals were 775.4 tonnes.

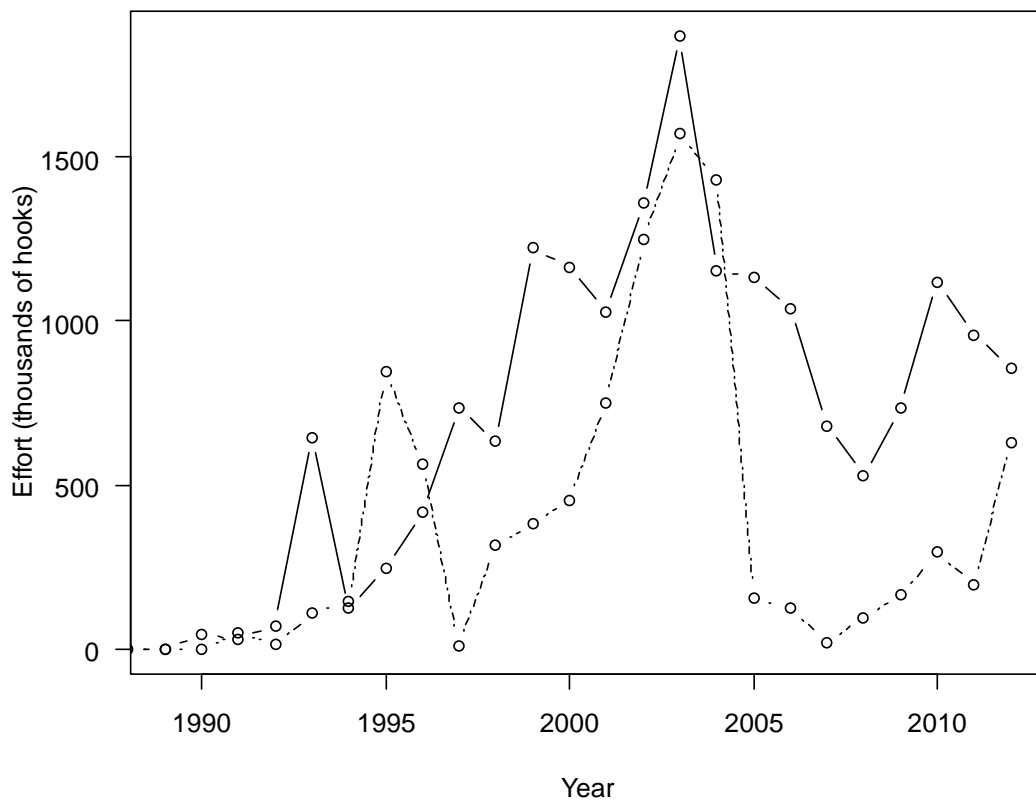
## 2 Catch and Effort

Catches for the charter fleet by calendar year and CCSBT region are provided in Table 2. Effort information is provided in Figure 2 and Table 3. Most catch and effort occurs in Region 6, which covers the west coast of the South Island fishing grounds. Over the period 2001-2004 there was little targeting of SBT (and no catches of SBT) by the charter fleet in Region 5, which covers the east coast North Island fishing grounds. Since then there has been a small amount of effort from charter vessels operating in the later part of the season in Region 5 each year but no effort in the last 3 years.

Catches for the domestic fleet by calendar year and CCSBT Region are provided in Table 4. SBT target effort for this sector is provided in Figure 3 and Table 5. A longline fishery targeting other highly migratory species also operates outside the SBT fishing season. It is important to separate these data out to better understand the New Zealand SBT fishery. For catches, the importance of the two regions has varied since 1995. While target effort increased dramatically in both regions from 1995 to 2003, it has decreased since then, particularly in Region 6. This decline is associated with a substantial decrease in the number of vessels in the surface longline fleet (Table 7), and the removal from the fleet of a domestically-owned freezer vessel that fished in region 6. Recent years have seen an increase in effort in region 6 by small domestic vessels as the operators of those vessels attempt to extend the season that they can fish for SBT.



**Figure 2: Effort (thousands of hooks) for the charter fleet in Region 5 (solid line – east coast North Island) and Region 6 (dashed line – west coast South Island). Note that this includes some non-SBT target effort in Region 5 and that no charter vessels fished in 1996.**



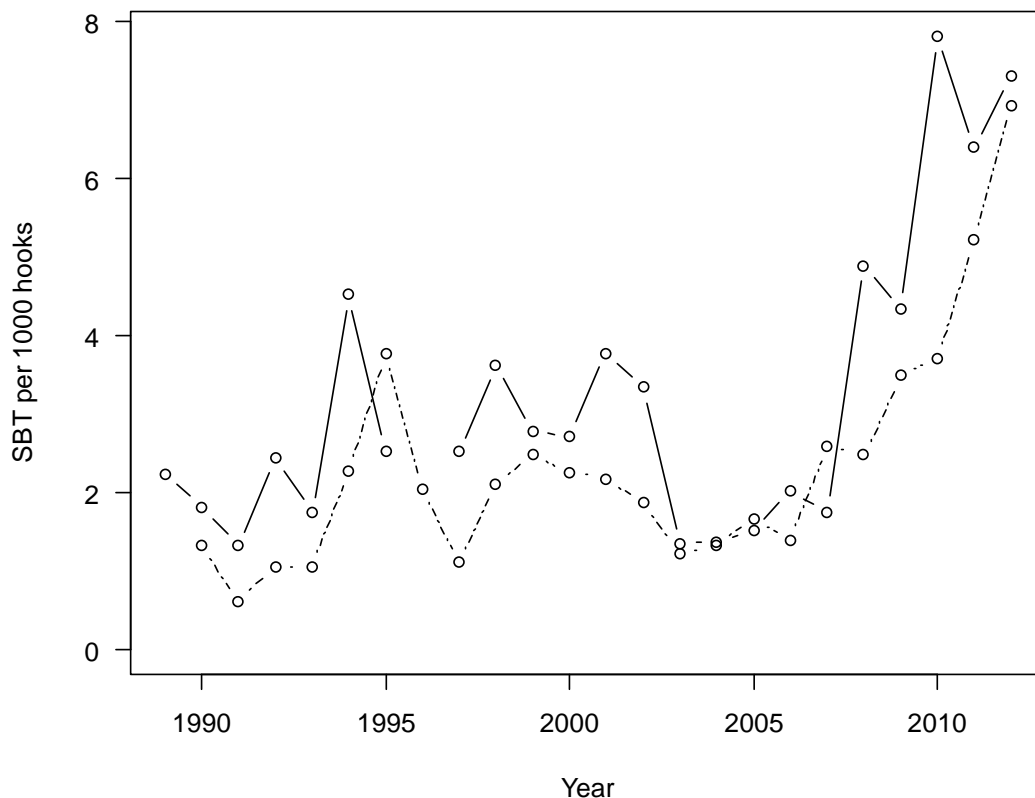
**Figure 3: Target effort (hooks from sets that either targeted or caught SBT – thousands of hooks) by the domestic fleet for Region 5 (solid line – east coast North Island) and Region 6 (dashed line – west coast South Island).**

### 3 Nominal CPUE

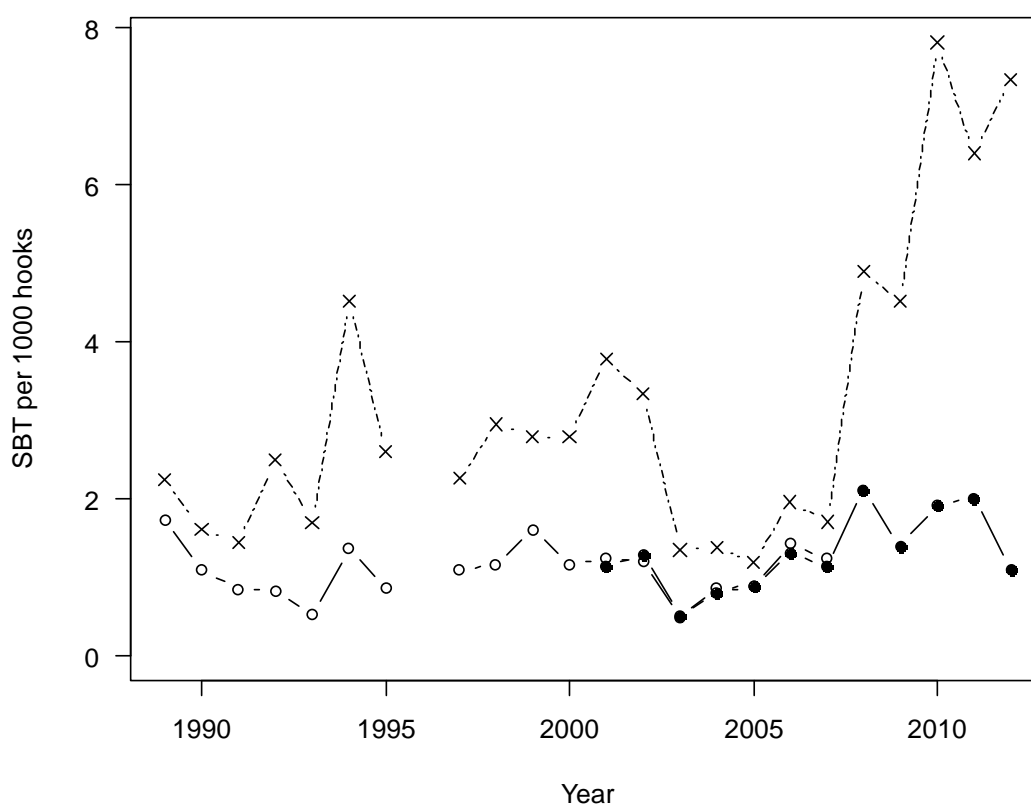
Nominal CPUE was calculated by fleet, year, and CCSBT Region. For the domestic fleet, CPUE was calculated for effort from sets that either caught or targeted SBT (referred to as target effort). Due to the large changes in the structure of the domestic fleet and the nature of the “Olympic system” under which the New Zealand fishery operated prior to 2004, the trends in the CPUE for the domestic fishery may not provide reliable information on trends in vulnerable biomass, although the CPUE does exhibit similar trends to that of the charter fleet.

Nominal CPUE by fleet across all regions based on targeted longline effort is provided in Figure 4. Associated with the lack of new recruitment (Section 4), CPUE declined dramatically for both charter and domestic fleets in 2003 and stayed at about these historically low levels (about one fish per 1000 hooks) for four to five consecutive years. The domestic fleet operating in Region 5 experienced an increase in 2007 and further increases in 2009, 2010, 2011 and 2012. A marked increase occurred in 2008 for the charter fleet and further increased to peak in 2010 at nearer 8 SBT per thousand hooks. The CPUE in both fleets in 2013 was similar at about 7 fish per 1000 hooks.

Nominal CPUE was also calculated for the charter fleet in Region 6 for fish thought to be of spawning age (SBT greater than 10 years of age). This was done based on both the proportional ageing of observer lengths and on the smaller dataset of SBT that were directly aged. The series are compared in Figure 5 and agree closely with each other in describing a slowly increasing trend to 2011; CPUE varies around one SBT per 1000 hooks with an historical low point in 2003 and the highest level for the series in 2008. There was a decline in the most recent year.



**Figure 4: Catch per unit effort (number of SBT per thousand hooks) by calendar year for the charter (solid line) and domestic (dashed line) longline fleets based only on effort from sets that either targeted or caught southern bluefin tuna.**



**Figure 5: Catch per unit effort (number of SBT per thousand hooks) from the charter fleet in Region 6 (west coast South Island) for all southern bluefin tuna (dashed line) and for fish greater than 10 years of age based on proportional ageing data (solid line, open symbols) and based on direct ageing data (solid line, solid symbols).**

## 4 Size composition

For fish length we consider data collected from 2001 to 2011 (Figures 6 and 7).

### 4.1.1 Size composition data

There was a very clear reduction in the range of sizes of SBT taken in the New Zealand fishery between 2001 and 2006. There is evidence of growth (progression of modes) over this period, but little evidence of recruitment of smaller fish to the New Zealand fishery. However, more recent data show a change, with smaller recruits appearing from 2006 and dominating the catch (by number) in 2010 (Figure 6). This mode mainly represents fish from the 2004 to 2006 year classes.

Due to lower levels of observer coverage historically in the domestic fishery, size composition data are not as well estimated for that fleet. Nevertheless, size composition data for the domestic fleet (based on observer reports) are provided in Figure 7 and show similar patterns to that observed in the charter fleet. These distributions may also be compared with those now available from the catch documentation system.

An examination of the proportion of the charter fleet catch under a given size since 1989 (Table 6; Figure 8) indicates that fish under 140 cm generally represent over 25% of the catch from the charter fleet, but were 10% or less for the four years from 2004 to 2007 and in 2010 represented nearer 60% of the catch. In 2012 this had dropped to about 35% as a result of



growth (progression of the mode). Overall, the proportions fluctuate in a manner consistent with periods of above and below average recruitment (e.g. two to three year cycles).

#### **4.1.2 Direct ageing data**

Proportions-at-age determined from direct ageing of fish caught by the charter fleet are available for the years 2001 to 2011 (Figure 9).

It is noted that the direct ageing showed considerably fewer 'plus group' fish than were estimated from proportional ageing (see New Zealand's country report 2010 for comparison). Direct ageing data have also been used to calculate the annual catch rates for SBT that are greater than 10 years of age (spawning age fish), as shown in Figure 5 above.

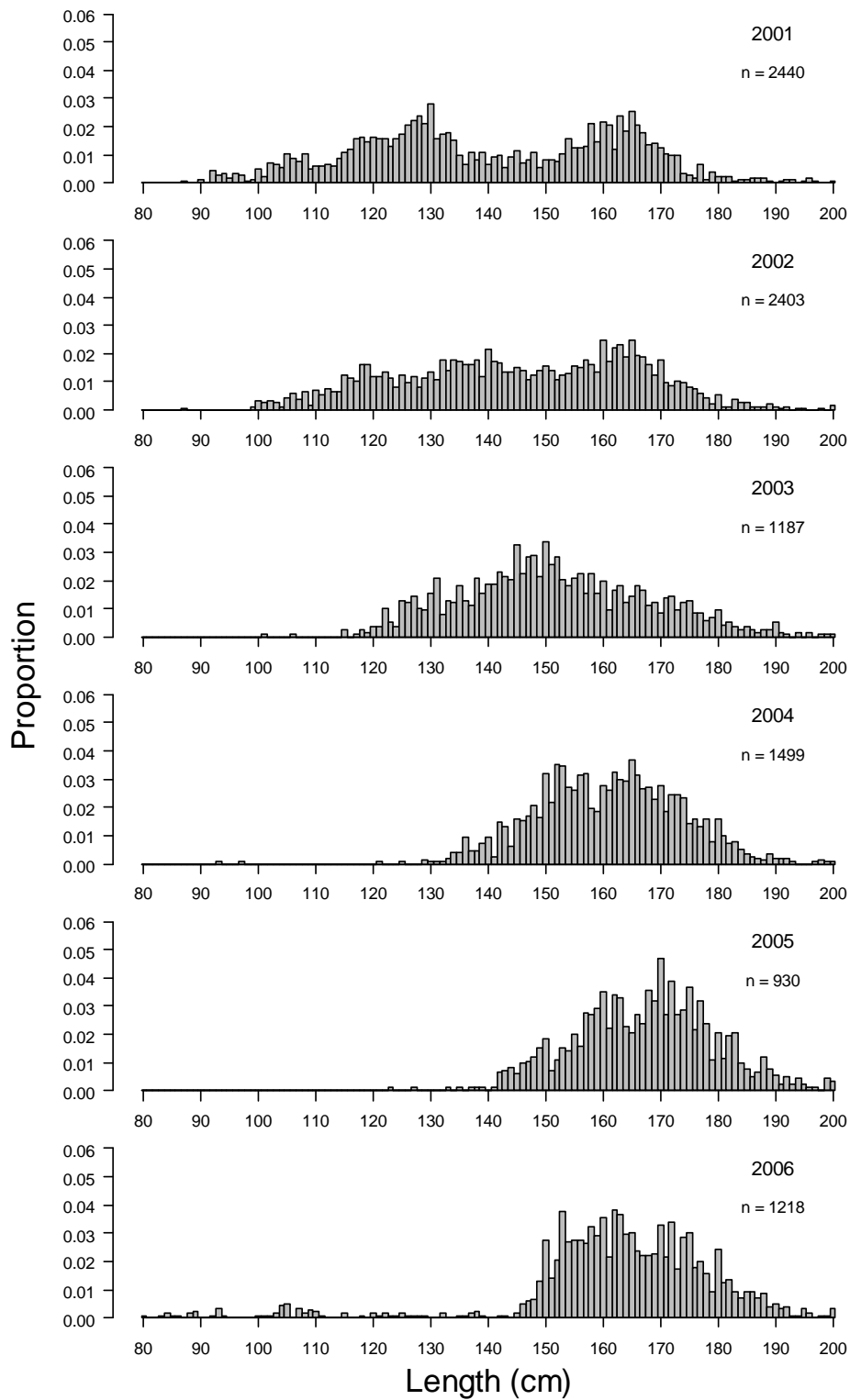


Figure 6: Proportion-at-length for the charter fleet for 2001 to 2012.

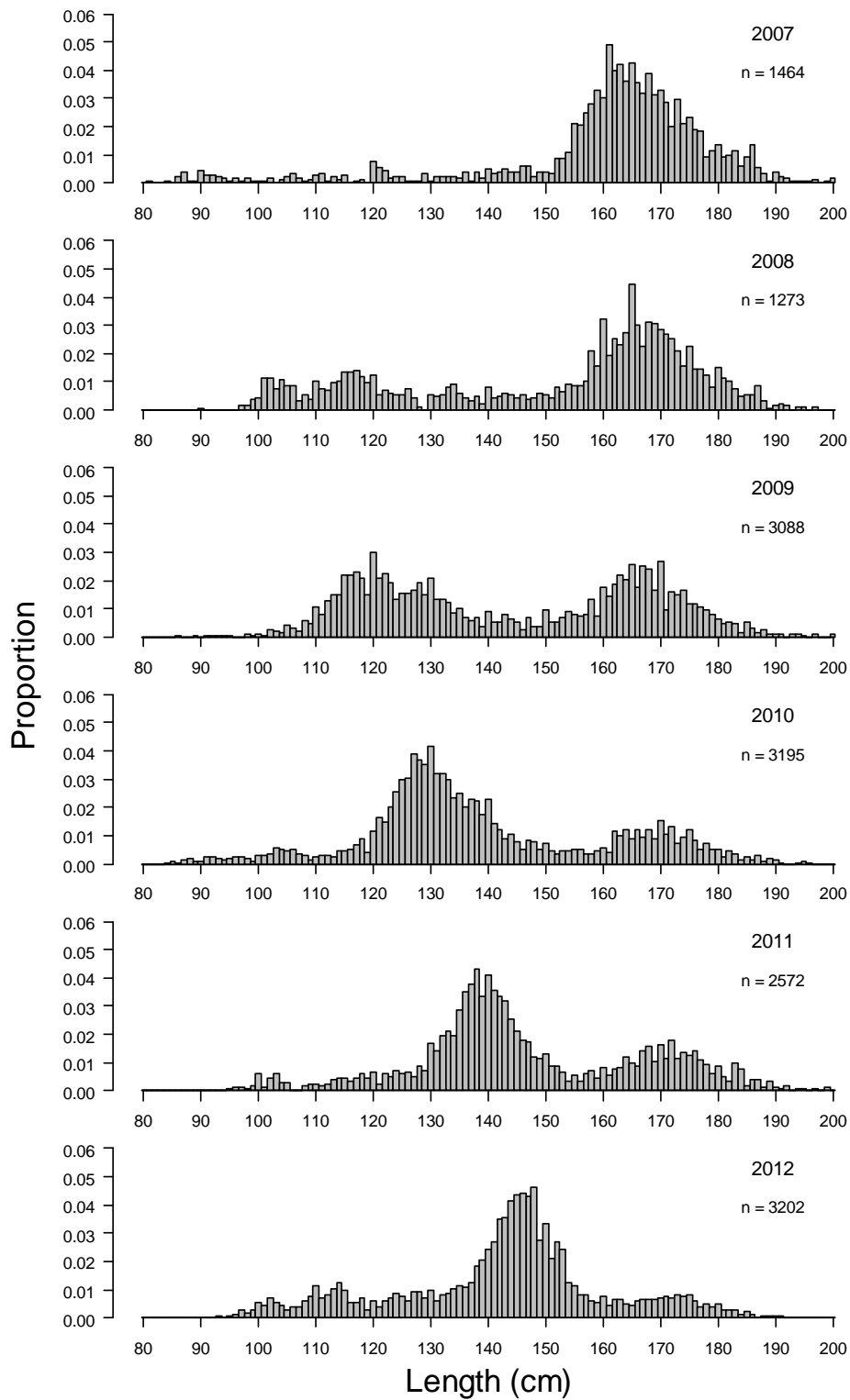


Figure 6(cont.): Proportion-at-length for the charter fleet for 2001 to 2012.

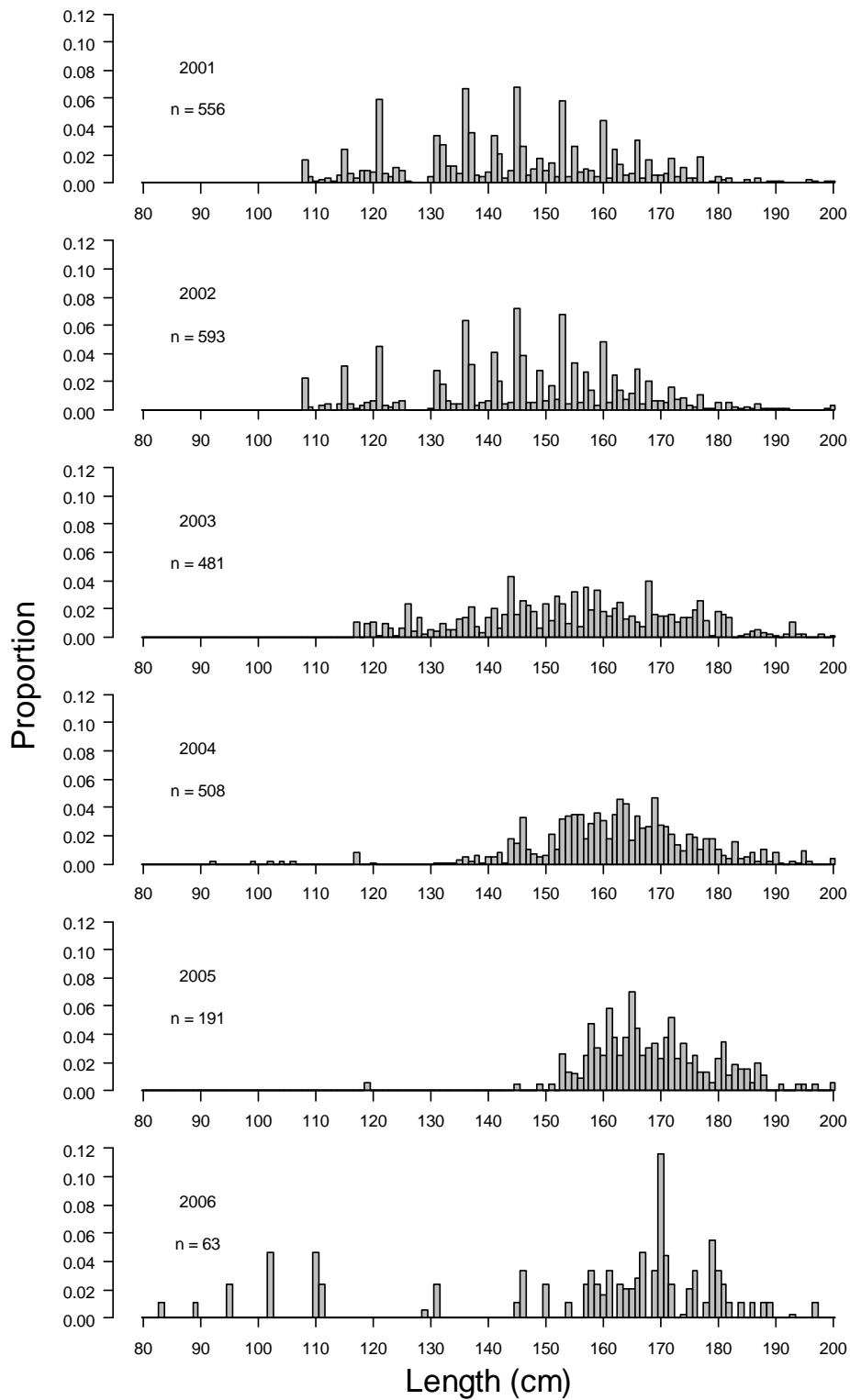


Figure 7: Proportion-at-length for the domestic fleet for 2001 to 2012.

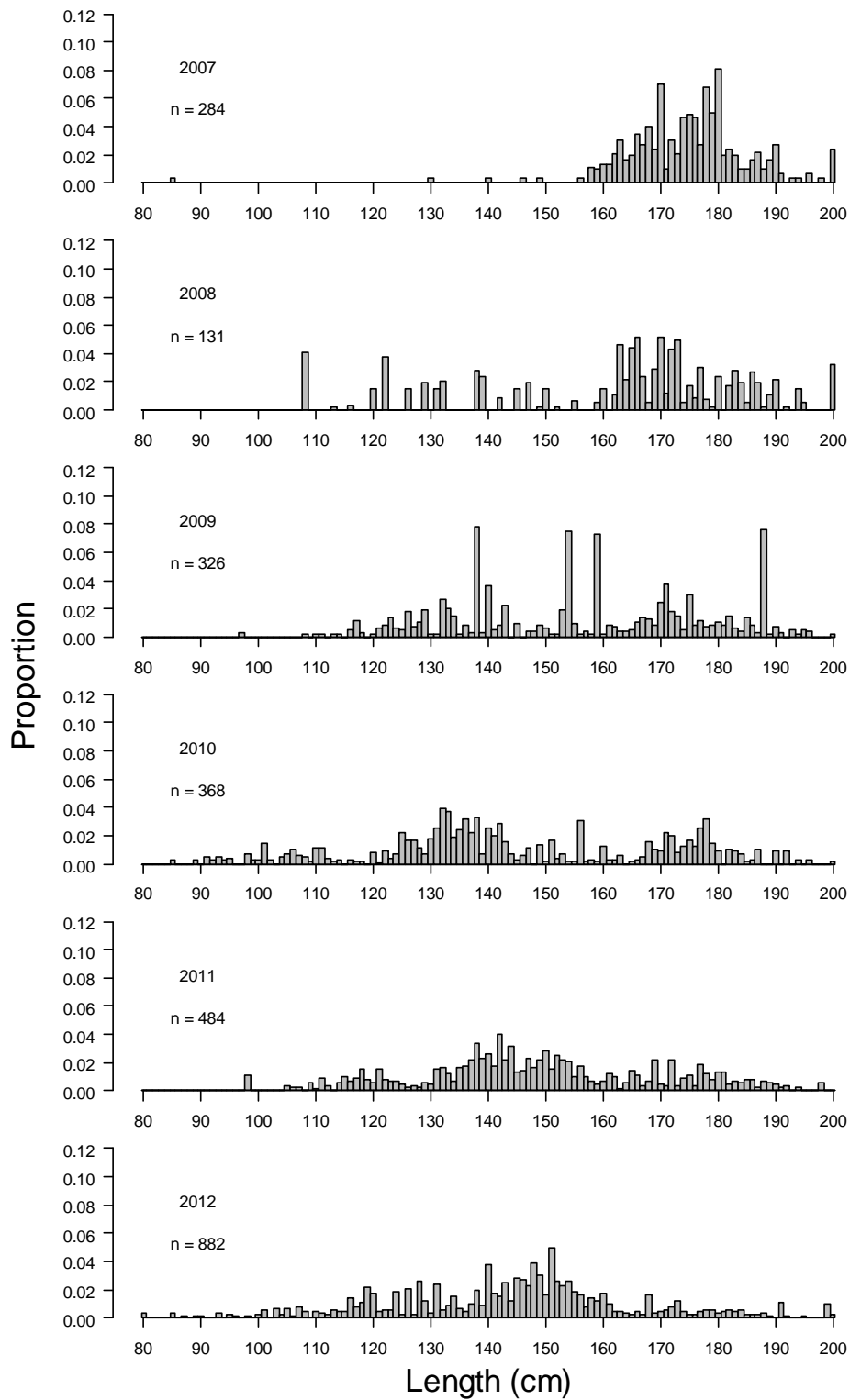
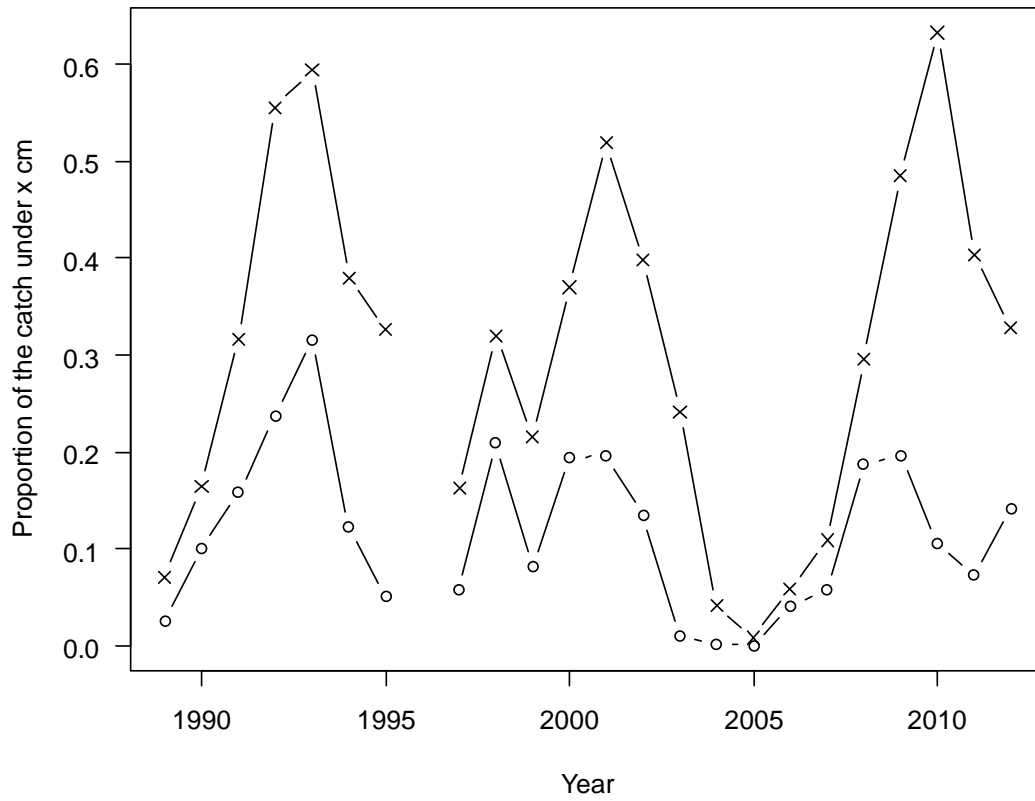
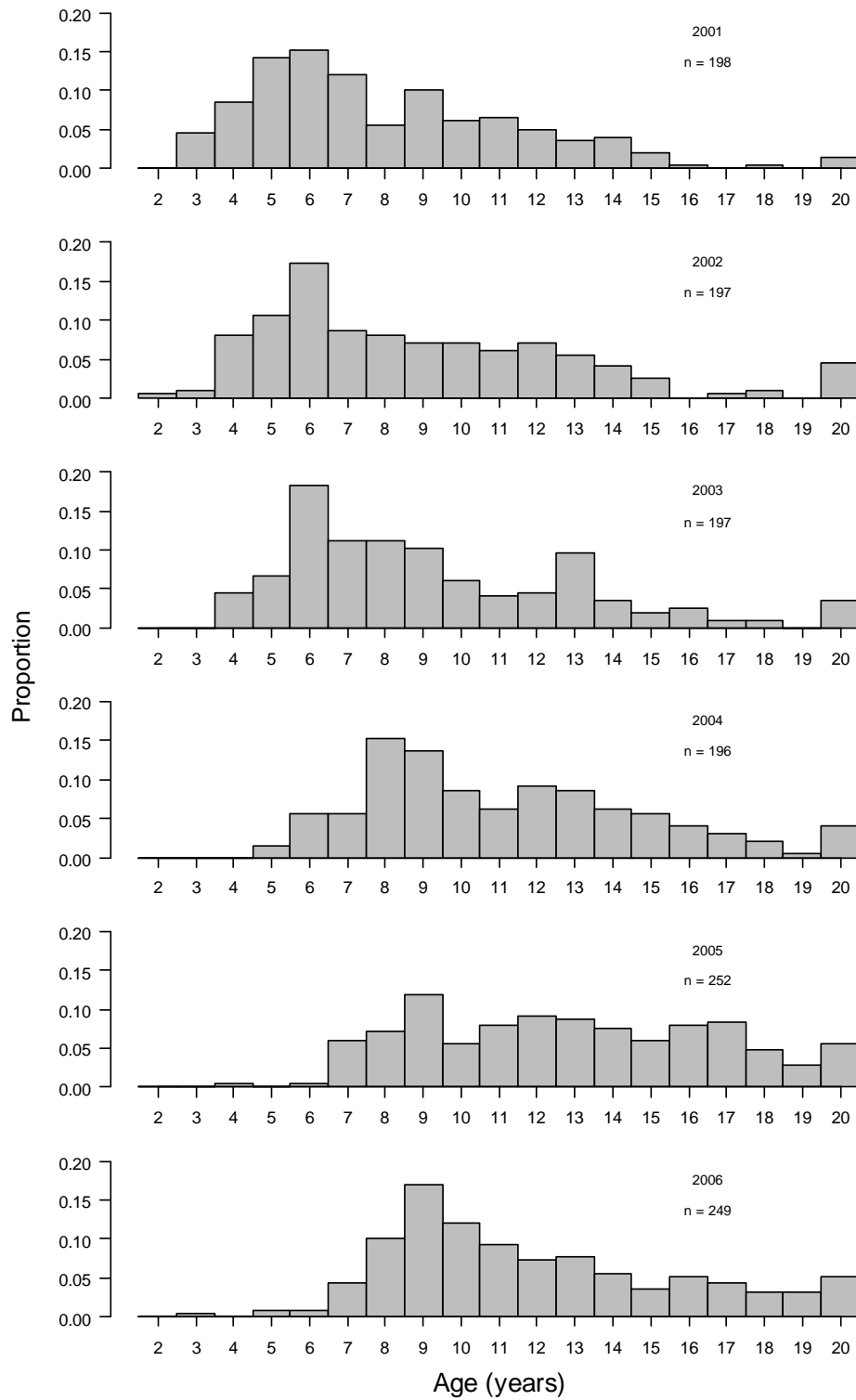


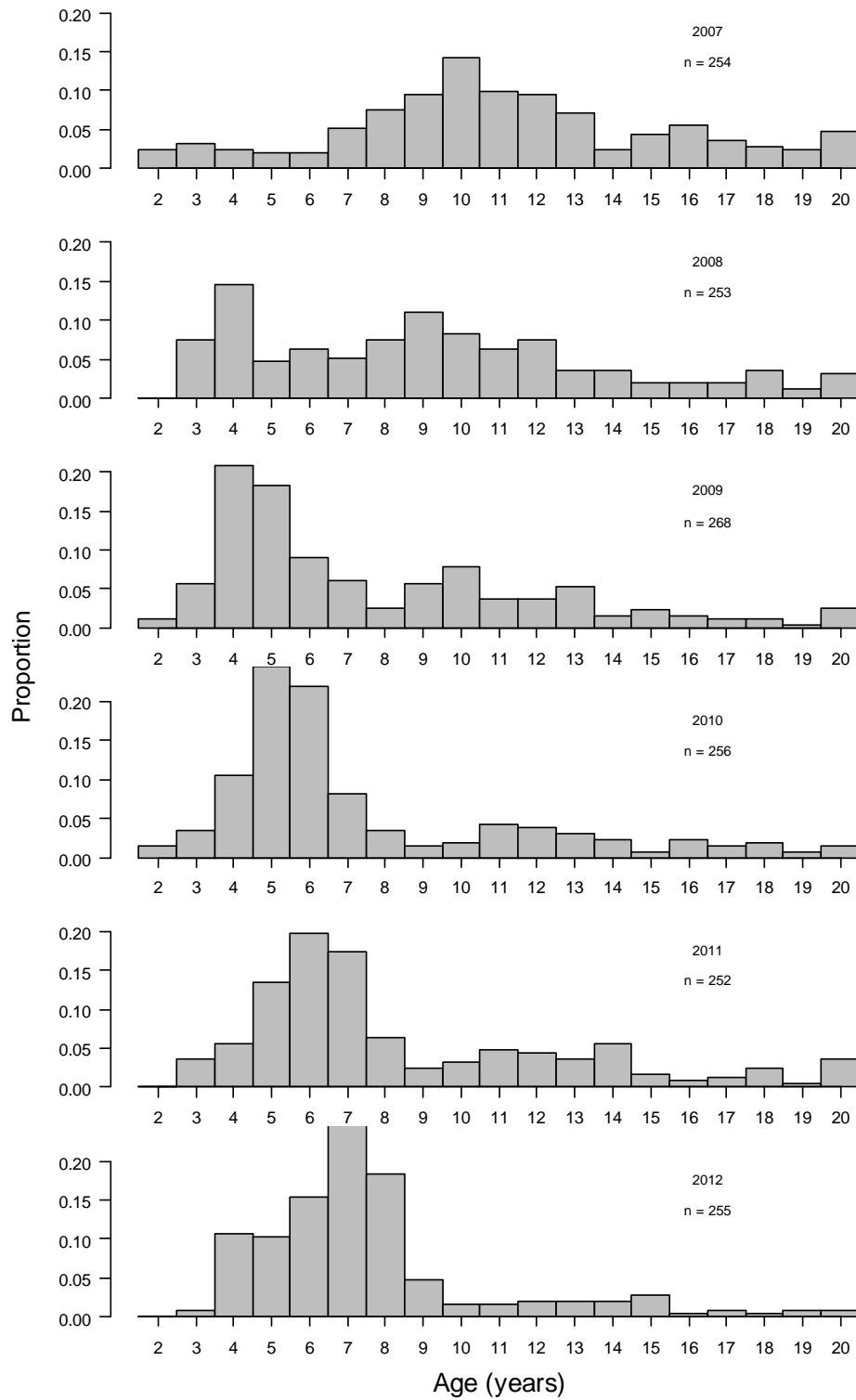
Figure 7 (cont.): Proportion-at-length for the domestic fleet for 2001 to 2012.



**Figure 8: Proportion of the catch from the charter fleet under 120 cm (o) and 140 cm (x) for 1989 to 2012.**



**Figure 9: Proportion-at-age for the charter fleet for 2001 to 2012 based on direct ageing. Age 20 is a plus group.**



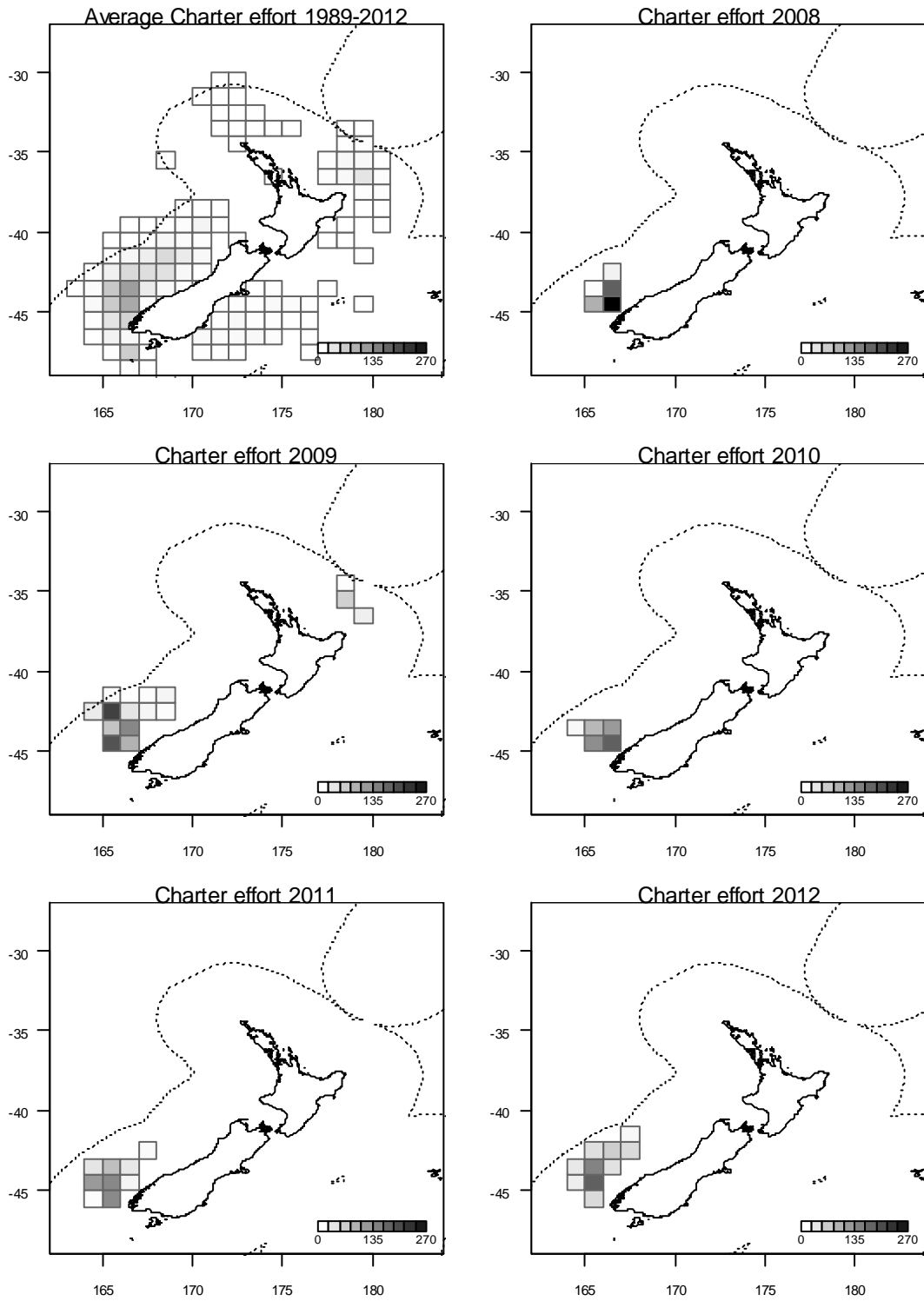
**Figure 9 (Cont.): Proportion-at-age for the charter fleet for 2001 to 2012 based on direct ageing. Age 20 is a plus group.**



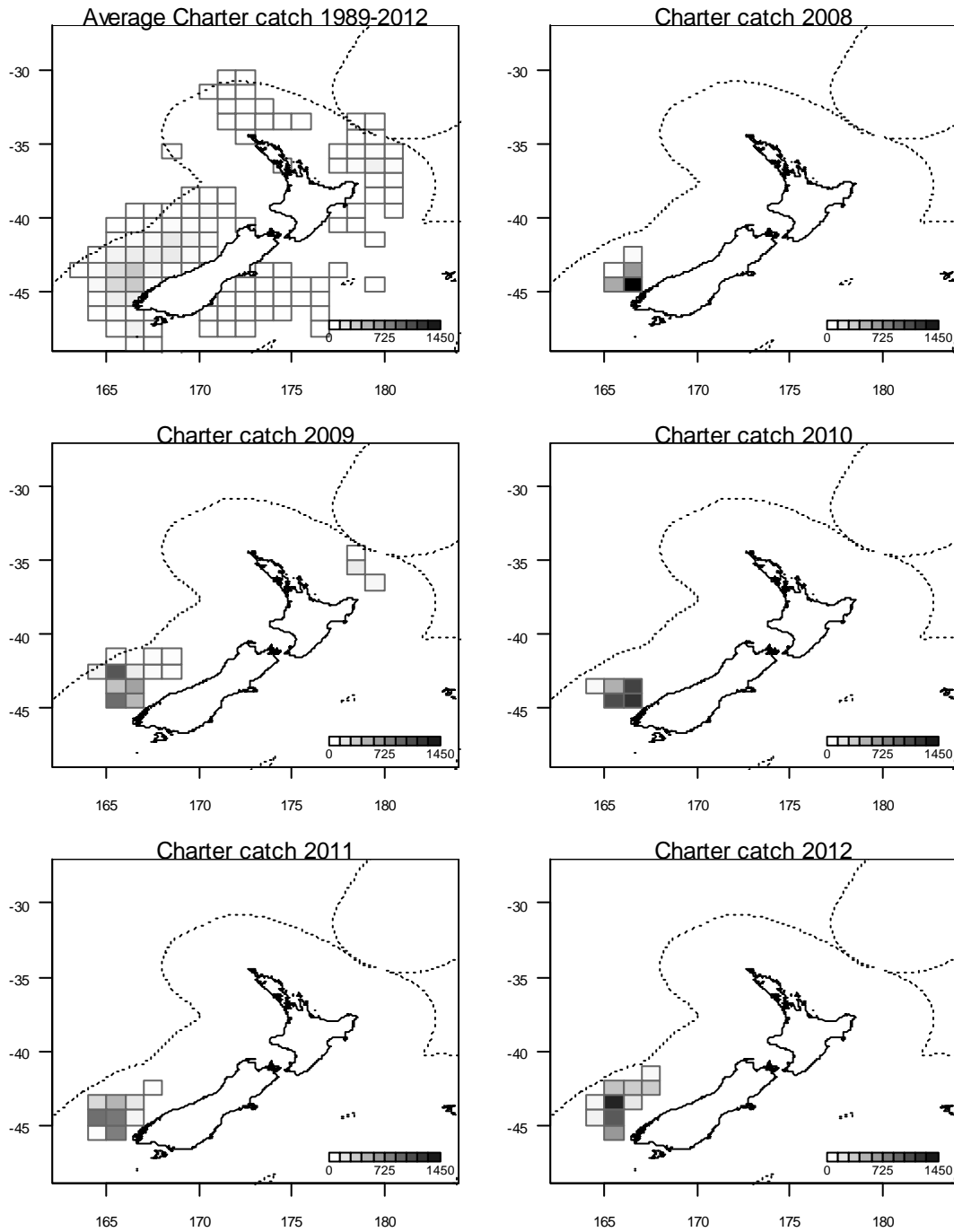
## **5 Fleet size and distribution**

The spatial distribution of fishing effort and SBT catches of the charter fleet are provided in Figures 10 and 11 respectively. Most of the charter catch and effort occurs off the WCSI. There has been little effort off the ECNI in most years since 2007 (none in the last 3 years).

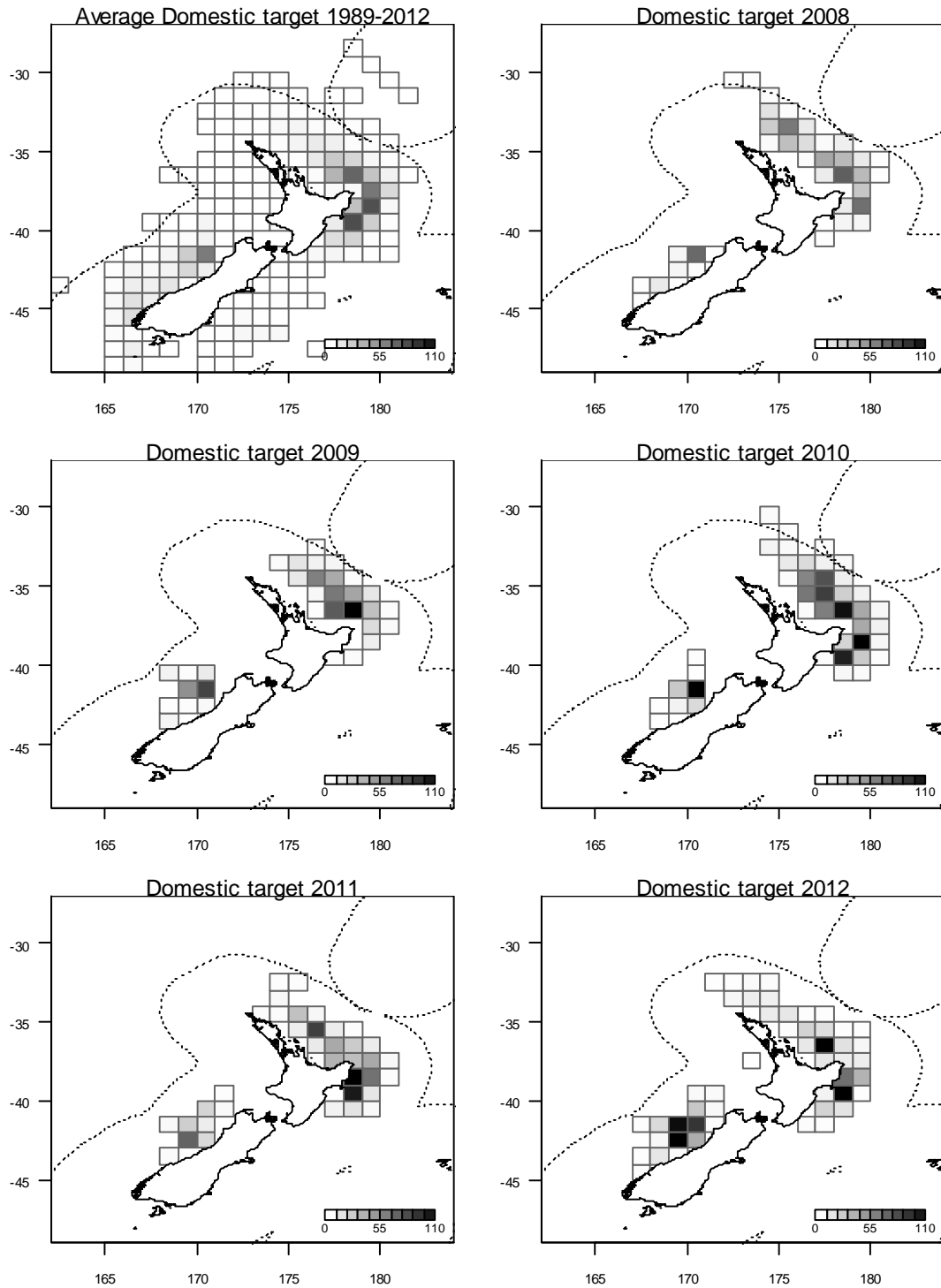
The spatial distribution of target fishing effort and SBT catches, respectively, of the domestic fleet are provided in Figures 12 and 13. While most target effort occurs off the ECNI, domestic vessels have operated off the WCSI since 2008. The distribution of catches is similar to that of target effort.



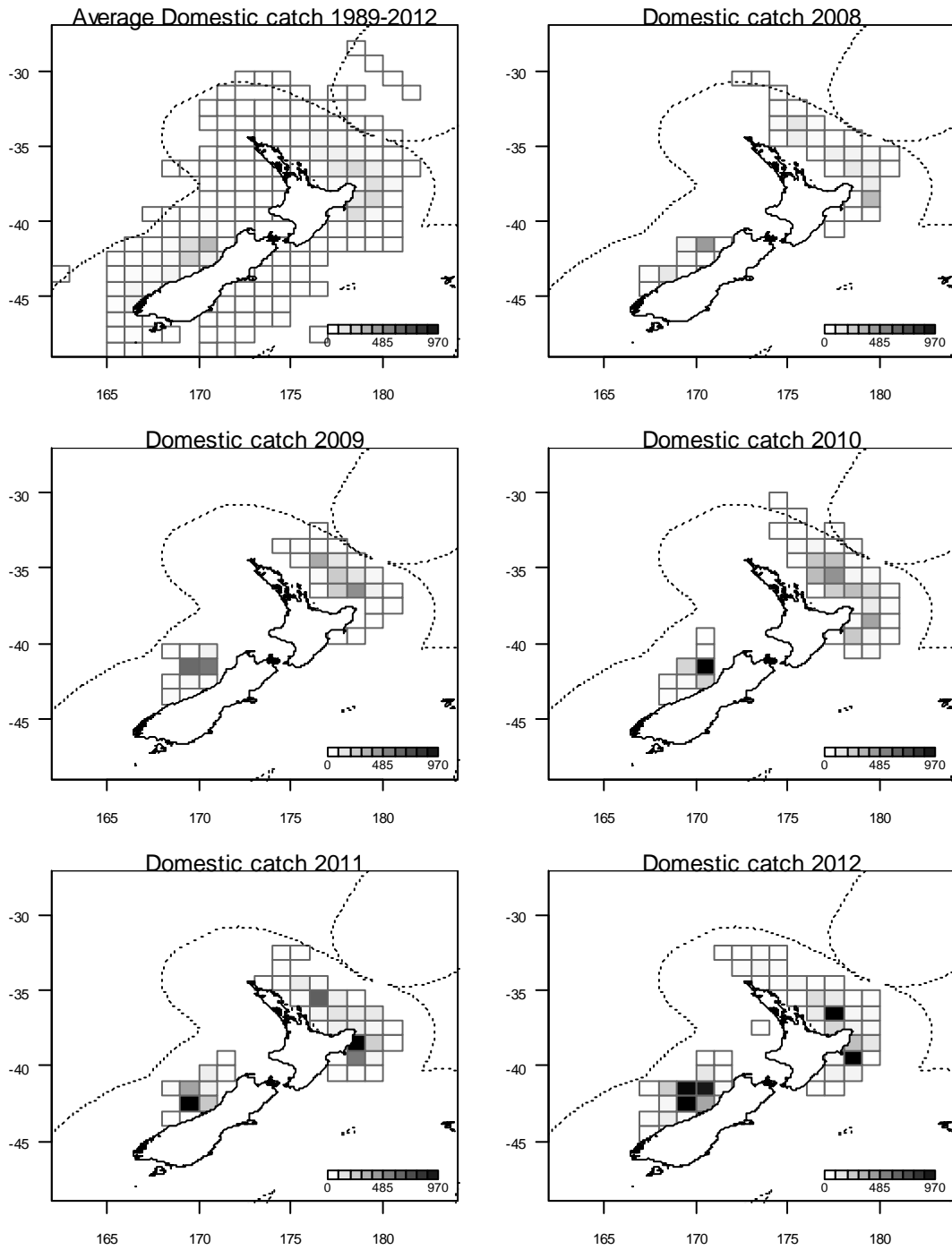
**Figure 10: Distribution of longline effort (thousands of hooks per 1 degree square) for the charter fleet: average for the time series (1989-2012), and annually for 2008 to 2012.**



**Figure 11: Distribution of longline catches (number of fish per 1 degree square) for the charter fleet: average for the time series (1989-2012), and annually for 2008 to 2012.**



**Figure 12: Distribution of longline effort (thousands of hooks per 1 degree square) for the domestic fleet that was targeted at southern bluefin tuna: average for the time series (1989-2012), and annually for 2008 to 2012.**



**Figure 13: Distribution of longline catches (number of fish per 1 degree square) for the domestic fleet: average for the time series (1989-2012), and annually for 2008 to 2012.**

## 6 Other relevant information

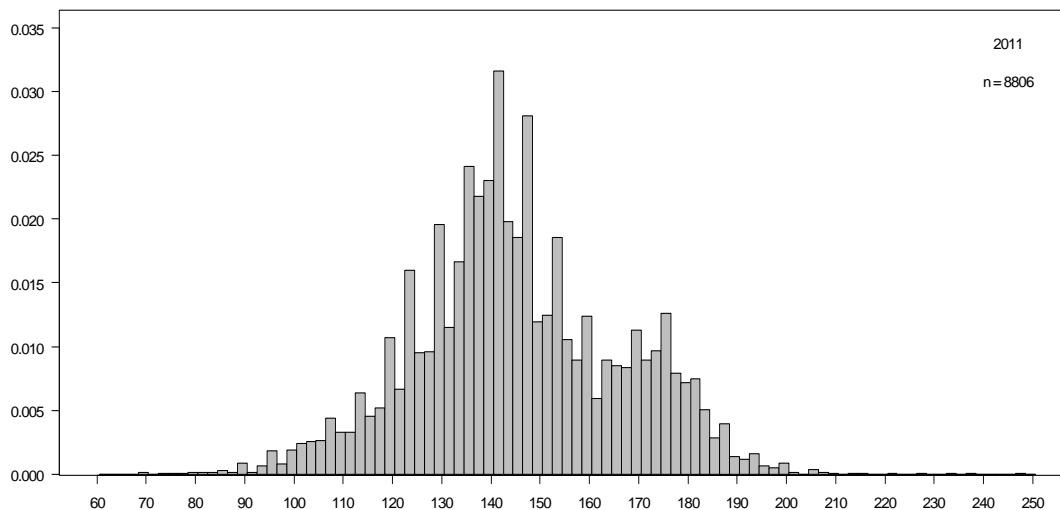
### 6.1.1 Observer programme

New Zealand's Observer Programme covers both domestic and charter longline vessels. All four charter vessels were covered by observers in 2012. The target coverage level for the domestic fleet is 10% of the effort to reflect 10% of the catch. Coverage is measured in two ways, proportion of catch (in numbers of fish) observed (Table 8) and proportion of hooks observed (Table 9).

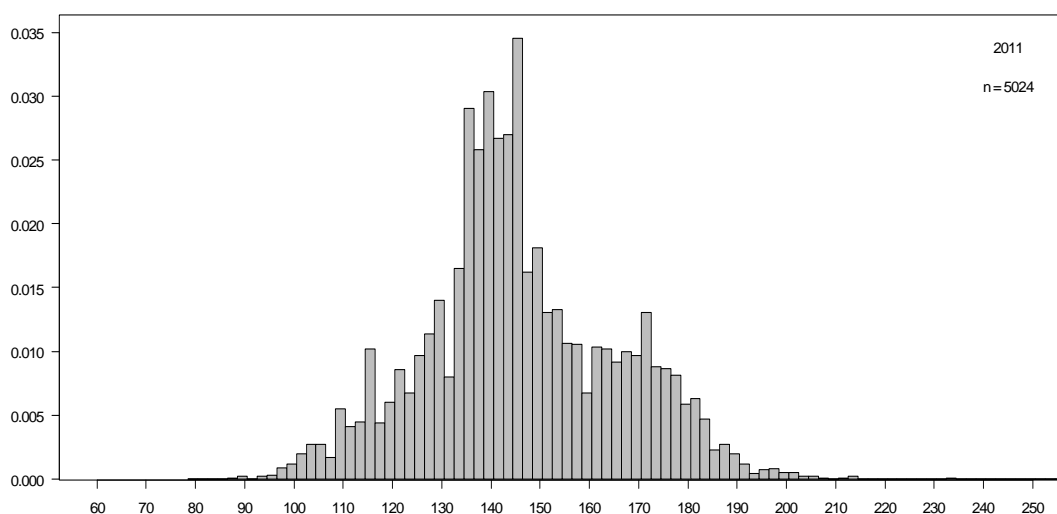
Around 80% of the catch was observed (and measured) in the charter fleet in 2012. This equated to 84% of hooks being observed on the charter vessels in 2012. For the domestic fleet, 9% of the catch and 7% of the hooks were observed in 2012.

Because only one observer is present on the vessel, and the observer takes breaks during the long hauling process on the charter vessels, it is not possible to observe all hooks on these vessels. The observer accurately reports the portions of the haul that are not observed. The proportion of the catch observed is generally higher than hooks observed, because some unobserved catches are recorded as they are available to the observer after their break. In the past, unobserved catches which were measured were noted.

Now all catch is measured to comply with the requirements of the catch documentation system. Figure 14 shows the length distribution of SBT reported on CDS forms in 2011 while Figure 15 shows the distribution for fish measured by Observers in the same year. The Observer data is a subset of the total catch but shows a very similar length distribution.



**Figure 14: Proportion-at-length for the SBT catches from 2011 reported on CDS forms.**



**Figure 15: Proportion-at-length for SBT catches from 2011 measured by Observers.**

### 6.1.2 Otolith collection

Observers onboard the charter vessels collect otoliths from as many SBT caught as possible. Due to the smaller size of the domestic vessels and the different processing practices, it is not feasible to collect otoliths from the domestic fleet.

A sub-sample of the otoliths from 2001 to 2011 has been aged and the information is described in this report. The number of otoliths collected and aged per year is shown in Table 10.

### 6.1.3 Estimation of non-retained catches

As required for the CCSBT data exchange, estimates of non-retained catches of SBT from the New Zealand charter and domestic fleets for the years 1989-2012 were provided to the Commission (Tables 11 and 12). The totals are based on observer estimates of discards and releases scaled to total effort.

There was no auxiliary information on the size structure of the discards, so it is assumed that they are representative of the retained catch. Discards have been separated into the categories alive and dead based on the annual proportions of alive/dead discards reported by observers.

Since 2004, fishers have also been required to report discards on their catch effort returns, providing another method to estimate non-retained catches. Also since 2004, specific provisions under the Fisheries Act have provided for the live releases of southern bluefin tuna where they are considered likely to survive. Such releases are also recorded on catch effort returns.

### 6.1.4 Non-commercial catches

Prior to the development of a recreational gamefishery targeting Pacific bluefin tuna (*Thunnus orientalis*) around 2007 (see below), recreational catches of southern bluefin tuna are likely to have been limited. This is because of the locations and seasons during which SBT are found in New Zealand waters (generally winter months and areas with little recreational fishing). However, there have been reports of bycatch of SBT in the recently developed sport fishery for Pacific bluefin off the west coast of the South Island. Generally,

the SBT are only taken early in the season (July) with the catch being almost entirely Pacific bluefin by August – September when most effort occurs.

A programme was initiated in 2007 to estimate the number and weight of fish kept or released. In 2007, about four tonnes was reported as being caught and retained while a further two tonnes of SBT were caught and released. In 2008 and 2009, provisional data suggests lower southern bluefin landings (around 0.4t and 0.1t respectively). Only an estimated two fish were landed by recreational sportfishers in 2010, for an estimated catch weight of 250kg. No data was available on releases. It is not known why reported recreational landings of southern bluefin have decreased since their apparent peak in 2007, but economic and social factors are likely to play a part.

Compulsory reporting for recreational charter vessel operators<sup>1</sup> was introduced in November 2010, and in 2012 a small number (4) of recreational charter vessel operators reported catching SBT in New Zealand fishery waters. These vessels reported a catch of 6 fish, 4 (estimated total weight 131 kg) of which were landed and 2 (165 kg) were released alive.

## 7 Acknowledgements

MPI acknowledges Terese Kendrick and John Holdsworth for assistance with various parts of this report. Also, we thank Simon Morgan for his assistance to New Zealand in the preparation of its data.

---

<sup>1</sup> A recreational charter vessel is a vessel that takes paying recreational fishing customers on fishing trips. The fish caught on the fishing trips are retained by the customers, and are not entitled to be sold or traded, so the catch is regarded as recreational catch.



**Table 1: Catches of southern bluefin tuna in New Zealand fisheries waters (tonnes whole weight) by calendar year and New Zealand fishing year (1 October to 30 September).**

<b>Year</b>	<b>Calendar year catches</b>	<b>Fishing year catches</b>
1980	130.0	130.0
1981	173.0	173.0
1982	305.0	305.0
1983	132.0	132.0
1984	93.0	93.0
1985	94.0	94.0
1986	82.0	82.0
1987	59.0	59.0
1988	94.0	94.0
1989	437.2	437.1
1990	529.2	529.3
1991	164.5	164.5
1992	279.2	279.2
1993	216.6	216.3
1994	277.0	277.2
1995	436.4	434.7
1996	139.3	140.4
1997	333.7	333.4
1998	337.1	333.0
1999	460.6	457.5
2000	380.3	381.7
2001	358.5	359.2
2002	450.3	453.6
2003	389.6	391.7
2004	393.3	394.0
2005	264.4	264.0
2006	238.2	238.2
2007	382.6	383.1
2008	319.0	318.8
2009	418.5	417.3
2010	500.8	500.0
2011	547.1	547.2
2012	775.5	775.4

**Table 2: Catch (t) for the charter fleet by year and CCSBT Region.**

Calendar Year	Region 5	Region 6	Other*
1989		296.3	0.3
1990	66.7	174.9	
1991	23.0	102.6	
1992	4.8	214.5	0.5
1993	20.2	120.5	9.5
1994		234.1	
1995	1.6	228.7	0.2
1996			
1997	52.3	186.2	
1998	83.9	117.3	
1999	9.8	190.7	
2000	2.5	132.5	
2001		139.3	
2002		148.4	
2003		82.1	
2004		126.4	
2005	34.4	53.0	
2006	9.9	95.3	
2007	53.0	161.0	
2008		200.0	
2009	17.0	201.2	
2010		207.8	
2011		199.1	
2012	0	240.1	0.1

\*Most often erroneous position data

**Table 3: Effort (thousands of hooks) for the charter fleet by year and CCSBT Region.**

Calendar Year	Region 5	Region 6	Other*
1989		1596	3.5
1990	259	1490.6	
1991	306	1056.5	
1992	47.6	1386.8	3
1993	174.1	1125.7	101.4
1994		799.1	
1995	27.1	1198.7	13.5
1996			
1997	135.2	1098.7	
1998	225	616	
1999	57.2	955.1	
2000	30.3	757.9	
2001		639.4	
2002		726.4	
2003	3	866.6	
2004		1113.5	
2005	137	498.9	
2006	39.4	562.5	
2007	271.6	1136.1	
2008		568.3	
2009	66.8	731.0	
2010		484.9	
2011		495.9	
2012		548.4	3.4

\*Most often erroneous position data

**Table 4: Catch (t) for the domestic fleet by year and CCSBT Region.**

Calendar Year	Region 5	Region 6	Other*
1980			130.0
1981			173.0
1982			305.0
1983			132.0
1984			93.0
1985			94.0
1986			82.0
1987			59.0
1988			94.0
1989	0.1	140.5	
1990	6.9	278.7	2.0
1991	0.9	37.8	0.1
1992	6.2	53.2	
1993	49.4	16.3	0.8
1994	6.5	35.6	0.8
1995	15.0	184.9	6.1
1996	34.2	103.8	1.3
1997	57.9	36.2	1.1
1998	83.4	52.2	0.4
1999	194.7	64.8	0.6
2000	184.0	60.9	0.4
2001	113.1	105.7	0.4
2002	135.7	162.9	3.2
2003	216.7	89.7	0.1
2004	101.0	165.9	
2005	165.2	11.6	0.3
2006	122.8	10.2	
2007	162.5	2.1	
2008	80.5	38.1	
2009	133.5	66.7	0.2
2010	204.8	88.2	
2011	237.2	110.8	
2012	249.1	286.2	

\* Includes erroneous position data and data without positions.

**Table 5: Effort (thousands of target<sup>#</sup> hooks) for the domestic fleet by year and CCSBT Region.**

Calendar Year	Region 5	Region 6	Other*
1989			
1990	41.7		
1991	31.5	49.2	
1992	71.7	12.1	
1993	644.0	108.1	7.7
1994	122.6	143.3	5.8
1995	221.5	760.4	26.7
1996	417.9	564.3	11.5
1997	736.4	8.9	17.3
1998	633.6	314.5	1.2
1999	1221.4	382.9	5.5
2000	1164.0	454.4	8.5
2001	1027.6	751.5	1.9
2002	1358.6	1246.8	13.5
2003	1868.7	1569.1	4.3
2004	1154.1	1431.9	1.2
2005	1133.0	153.6	2.4
2006	1036.4	122.4	0.9
2007	681.2	19.0	
2008	527.8	94.0	
2009	733.9	165.4	1.3
2010	1116.7	294.3	
2011	955.0	197.8	
2012	858.1	629.8	

\* Includes erroneous position data and data without position data

# Effort for sets that either targeted or caught southern bluefin tuna

**Table 6: Proportion of the catch from the charter fleet under 110, 120, 130, and 140 cm for 1989 to 2012.**

Year	< 110 cm	< 120 cm	< 130 cm	< 140 cm
1989	0.006	0.026	0.045	0.071
1990	0.041	0.101	0.131	0.164
1991	0.114	0.158	0.274	0.317
1992	0.052	0.237	0.392	0.556
1993	0.217	0.316	0.472	0.594
1994	0.028	0.122	0.229	0.380
1995	0.019	0.05	0.161	0.326
1996	NA	NA	NA	NA
1997	0.038	0.057	0.098	0.162
1998	0.094	0.209	0.247	0.321
1999	0.033	0.082	0.157	0.216
2000	0.067	0.194	0.279	0.370
2001	0.093	0.196	0.378	0.519
2002	0.037	0.135	0.245	0.398
2003	0.002	0.009	0.094	0.241
2004	0.001	0.001	0.004	0.042
2005	0.000	0.000	0.002	0.008
2006	0.035	0.041	0.051	0.059
2007	0.042	0.058	0.087	0.109
2008	0.080	0.181	0.230	0.289
2009	0.033	0.196	0.384	0.485
2010	0.062	0.106	0.366	0.633
2011	0.035	0.073	0.135	0.403
2012	0.062	0.142	0.212	0.328

**Table 7: Number of vessels catching southern bluefin tuna in New Zealand fisheries waters by Calendar year and New Zealand fishing year (1 October to 30 September).**

<b>Year</b>	<b>Calendar year vessel numbers</b>	<b>Fishing year vessel numbers</b>
2001	132	132
2002	151	155
2003	132	132
2004	99	101
2005	57	58
2006	56	57
2007	44	45
2008	35	36
2009	40	39
2010	44	42
2011	42	42
2012	43	44

**Table 8: Observer coverage in terms of catch (proportion of numbers observed) for the charter (NZC) and domestic (NZD) fleets for 2011 and 2012.**

<b>Calendar year</b>	<b>NZC</b>	<b>NZD</b>
2011	0.81	0.08
2012	0.80	0.09

**Table 9: Observer coverage in terms of effort (proportion of hooks observed) for the charter (NZC) and domestic (NZD) fleets for 2011 and 2012.**

<b>Calendar year</b>	<b>NZC</b>	<b>NZD</b>
2011	0.74	0.08
2012	0.84	0.07

**Table 10: Number of otoliths collected and aged by observers from the charter fleet catch for the years 2000 – 2012.**

<b>Year</b>	<b>Otoliths</b>	<b>Number aged</b>
2000	149	0
2001	777	198
2002	1199	197
2003	838	197
2004	1141	196
2005	417	252
2006	443	249
2007	714	254
2008	745	253
2009	1066	268
2010	875	258
2011	604	270
2012	1252	255

**Table 11: Actual number of releases and discards observed and the estimated total number of discards (separated by life status<sup>2</sup> - alive and dead) based on observer coverage and the life status of the observed discards for the charter fleet. Note that numbers are rounded to the nearest whole fish.**

Year	Observed	Scaled estimate		
	Numbers	Alive (released)	Dead	Total
1989	0	0	0	0
1990	0	0	0	0
1991	0	0	0	0
1992	0	0	0	
1993	22	55	13	68
1994	36	40	13	53
1995	5	4	9	13
1996		0	0	
1997	23	0	38	38
1998	20	0	20	20
1999	33	18	15	33
2000	3	0	4	4
2001	6	3	4	6
2002	5	2	3	5
2003	2	0	2	2
2004	2	0	2	2
2005	0	0	0	0
2006	4	2	2	5
2007	3	4	2	5
2008	0	0	0	0
2009	5	6	0	6
2010	12	12	3	15
2011	10	14	0	14
2012	36	43	0	43

<sup>2</sup> The Resolution on Reporting all Sources of Mortality of Southern Bluefin Tuna requires that members report the fate of discards. New Zealand does not currently use the moribund category when reporting fate of captures. Moribund fish are included within the “dead” category reflecting the domestic requirement that only discarded fish which are “likely to survive” can be considered “alive”.

**Table 12: Actual number of releases and discards observed and the estimated total number of discards (separated by life status - alive and dead) based on observer coverage and the life status of the observed discards for the Domestic fleet. Note that numbers are rounded to the nearest whole fish.**

Year	Observed Numbers	Scaled estimate		
		Alive (released)	Dead	Total
1989	0			
1990	0			
1991	0			
1992	0	0	0	0
1993	0			
1994	0	0	0	0
1995	4	10	20	30
1996	5	25	6	31
1997	1	0	4	4
1998	0	0	0	0
1999	0	0	0	0
2000	0	0	0	0
2001	5	8	10	18
2002	4	24	30	53
2003	0	0	0	0
2004	1	0	7	7
2005	5	33	8	42
2006	1	16	0	16
2007	2	8	8	15
2008	2	13	0	13
2009	2	12	12	24
2010	26	282	25	307
2011	44	442	84	526
2012	66	745	65	810